



Australian Government



Murray-
Darling
Basin
Authority

Roadmap to the 2026 Basin Plan Review

Pistachio Spring Symposium

September 2023



Acknowledgement of Country



Covers an area of more than a million square kilometres



7,300 irrigated agriculture businesses



Home to 2.3 million Australians



16 internationally recognised and protected wetlands

The Murray–Darling Basin is Australia's largest and most complex river system



Agriculture output worth more than \$22 billion each year



More than 40 First Nations



120 species of native and migratory birds

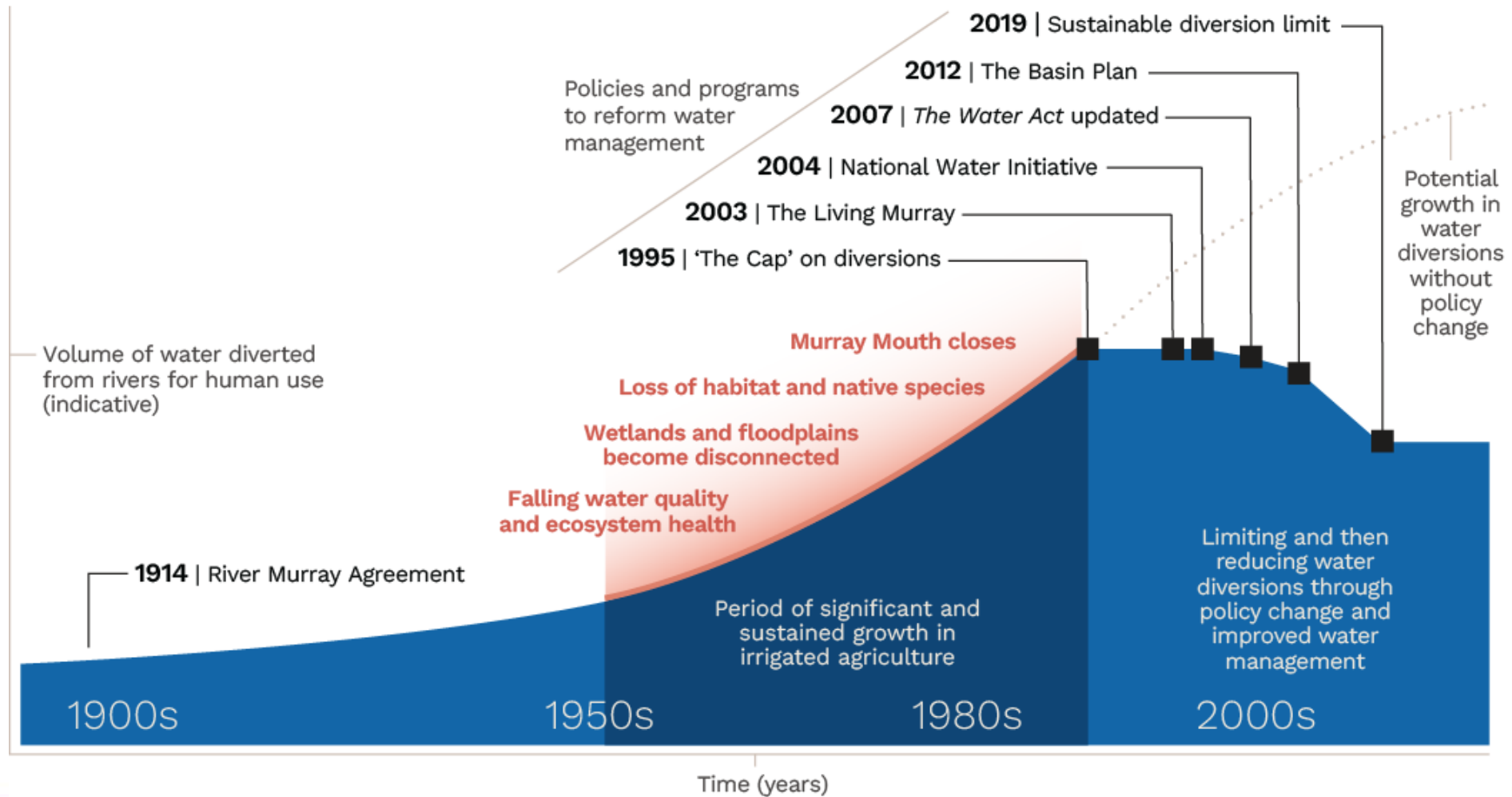


Tourism industry worth \$11 billion each year



More than 50 species of native fish

Overview of water reform in the Basin



What is the Basin Plan?



The Basin Plan is a package of water management reforms

Governance, compliance and engagement



Water for the environment contributes to improving the health of the Basin's rivers, lakes, wetlands and floodplains



Compliance is essential to ensure water resources are managed sustainably and that all water users meet their water use obligations



Water trade enables the purchase and sale of water through efficient water markets, to enhance productivity while protecting the environment



Monitoring and accounting is ongoing across all water management components. This information is publically accessible



Sustainable diversion limits set how much water can be taken out of the Basin's waterways for use by communities and industries



Water resource plans are developed for catchments across the Basin to outline how water will be managed at a local level

Assessment and monitoring

Why review the Basin Plan?

- Regular 10 yearly reviews are required
 - Significant improvements in our understanding of climate change and how we manage environmental water
 - Basin Plan Review enables adaptive management
 - Opportunity to incorporate new knowledge and evidence
 - Implementation **must** continue
-

Climate change



How can the Basin Plan be improved to respond to climate change?

Sustainable Water Limits



How do we ensure a sustainable Basin, delivering the best outcomes for all social, cultural, environmental and economic values?

First Nations



How can the Basin Plan be improved to better recognise First Nations' values in water management and enhance their involvement?

Regulatory design



How can the Basin Plan framework be simplified?

Basin Plan Review timeline



Stay informed and be part of our progress

Subscribe now for updates and for opportunities to have your say



mdba.gov.au/basinplanreview



[@MD_Basin_Auth](https://twitter.com/MD_Basin_Auth)



facebook.com/MDBAuth



au.linkedin.com/company/murray-darling-basin-authority



Australian Government



Murray-Darling
Basin
Authority

Thank you.

 mdba.gov.au

 1800 630 114

 engagement@mdba.gov.au

Office locations – *First Nations Country*

Adelaide – *Kaurna Country*

Canberra – *Ngunnawal Country*

Goondiwindi – *Bigambul Country*

Griffith – *Wiradjuri Country*

Mildura – *Latji Latji Country*

Murray Bridge – *Ngarrindjeri Country*

Wodonga – *Dhudhuroa Country*