

# Reading the Out Turn Reports

PIT June 2018



**Pistachio Growers' Association**

# APPC Results

Out Turn report sent to each grower for each load delivered



## GROWER REFERENCE DETAIL

From 26/02/18 To 27/06/18, Year: 2018, Grower: PFruits,

Grower	Lot #	Date	Bins Rcd	Delivered kg	Trash	Net Delivered	Gross Dry Yield	Blanks, Shell, FM	Marketable Yield %	No 1 Grade Small % /100	No 1 Grade Medium % /100	No 1 Grade Jumbo % /100	Light Stain %	Narrow Splits %	Loose Kernels %	Closed Shell %	Floaters %	Total Pick Outs %	Adh Hull %	Dark Stain %	Shell Damage %				
PFruits																									
Grower Field Ref: No Field																									
Shake: 1																									
	2	26/02/18	24	9,849	1.1%	9,742	3,176	2.6%	31.7%	7.6%	116	74.1%	87	2.8%	70	1.1%	5.0%	0.1%	6.4%	0.6%	2.3%	0.1%	1.8%	0.4%	
	20	28/02/18	18	6,913	0.6%	6,870	2,152	4.3%	30.0%	0.1%	200	76.0%	93	1.0%	71	4.4%	4.5%	0.1%	5.4%	1.0%	7.5%	2.4%	3.4%	1.7%	
	245	12/03/18	25	9,844		9,844	3,213	14.8%	27.8%	3.5%	132	59.1%	90	2.5%	69	10.9%	1.7%		5.1%	2.9%	14.3%	4.8%	7.1%	2.4%	
	271	14/03/18	13	5,247	0.1%	5,241	1,760	9.9%	30.3%	2.7%	128	66.3%	86	0.8%	60	11.4%	2.4%	0.3%	6.1%	1.9%	8.2%	1.7%	3.9%	2.6%	
	Shake: 1 Totals:		80	31,852	0.5%		31,696	10,302	8.0%	29.9%	4.0%	141	68.9%	89	2.0%	68	6.4%	3.5%	0.1%	5.7%	1.6%	7.9%	2.2%	4.0%	1.6%
								827	9,475		377	6,523	187		604		333	12	544	147	747	210	383	154	
	No Field Totals:		80	31,852	0.5%		31,696	10,302	8.0%	29.9%	4.0%	141	68.9%	89	2.0%	68	6.4%	3.5%	0.1%	5.7%	1.6%	7.9%	2.2%	4.0%	1.6%
								827	9,475		377	6,523	187		604		333	12	544	147	747	210	383	154	
	PFruits Totals:		80	31,852	0.5%		31,696	10,302	8.0%	29.9%	4.0%	141	68.9%	89	2.0%	68	6.4%	3.5%	0.1%	5.7%	1.6%	7.9%	2.2%	4.0%	1.6%
								827	9,475		377	6,523	187		604		333	12	544	147	747	210	383	154	
	Grand Totals:		80	31,852	0.5%		31,696	10,302	8.0%	29.9%	4.0%	141	68.9%	89	2.0%	68	6.4%	3.5%	0.1%	5.7%	1.6%	7.9%	2.2%	4.0%	1.6%
								827	9,475		377	6,523	187		604		333	12	544	147	747	210	383	154	



Grower	Lot #	Date	Bins Rod	Delivered kg	Trash	Net Delivered	Gross Dry Yield	Blanks, Shell, FM	Marketable Yield %
<b>PFruits</b>									
Grower Field Ref:			No Field						
Shake: 1									
	2	26/02/18	24	9,849	1.1%	9,742	3,176	2.6%	31.7%
	20	28/02/18	18	6,913	0.6%	6,870	2,152	4.3%	30.0%
	245	12/03/18	25	9,844		9,844	3,213	14.8%	27.8%
	271	14/03/18	13	5,247	0.1%	5,241	1,760	9.9%	30.3%
Shake: 1 Totals:			80	31,852	0.5%	31,696	10,302	8.0% 827	29.9% 9,475
No Field (Grade%) Totals: (GradeKg)			80	31,852	0.5%	31,696	10,302	8.0% 827	29.9% 9,475
PFruits Totals:			80	31,852	0.5%	31,696	10,302	8.0% 827	29.9% 9,475
Grand Totals:			80	31,852	0.5%	31,696	10,302	8.0% 827	29.9% 9,475

Marketable Yield %	No 1 Grade Small		No 1 Grade Medium		No 1 Grade Jumbo		Light Stain %	Narrow Splits %	Loose Kernels %	Closed Shell %	Floaters %	Total Pick Outs %	Adh Hull %	Dark Stain %	Shell Damage %
	%	/100	%	/100	%	/100									
31.7%	7.6%	116	74.1%	87	2.8%	70	1.1%	5.0%	0.1%	6.4%	0.6%	2.3%	0.1%	1.8%	0.4%
30.0%	0.1%	200	76.0%	93	1.0%	71	4.4%	4.5%	0.1%	5.4%	1.0%	7.5%	2.4%	3.4%	1.7%
27.8%	3.5%	132	59.1%	90	2.5%	69	10.9%	1.7%		5.1%	2.9%	14.3%	4.8%	7.1%	2.4%
30.3%	2.7%	128	66.3%	86	0.8%	60	11.4%	2.4%	0.3%	6.1%	1.9%	8.2%	1.7%	3.9%	2.6%
29.9% 9,475	4.0%	141 377	68.9% 6,523	89	2.0%	68 187	6.4% 604	3.5% 333	0.1% 12	5.7% 544	1.6% 147	7.9% 747	2.2% 210	4.0% 383	1.6% 154
29.9% 9,475	4.0%	141 377	68.9% 6,523	89	2.0%	68 187	6.4% 604	3.5% 333	0.1% 12	5.7% 544	1.6% 147	7.9% 747	2.2% 210	4.0% 383	1.6% 154
29.9% 9,475	4.0%	141 377	68.9% 6,523	89	2.0%	68 187	6.4% 604	3.5% 333	0.1% 12	5.7% 544	1.6% 147	7.9% 747	2.2% 210	4.0% 383	1.6% 154
29.9% 9,475	4.0%	141 377	68.9% 6,523	89	2.0%	68 187	6.4% 604	3.5% 333	0.1% 12	5.7% 544	1.6% 147	7.9% 747	2.2% 210	4.0% 383	1.6% 154

# Benchmarking

Where are your results compared to other growers?

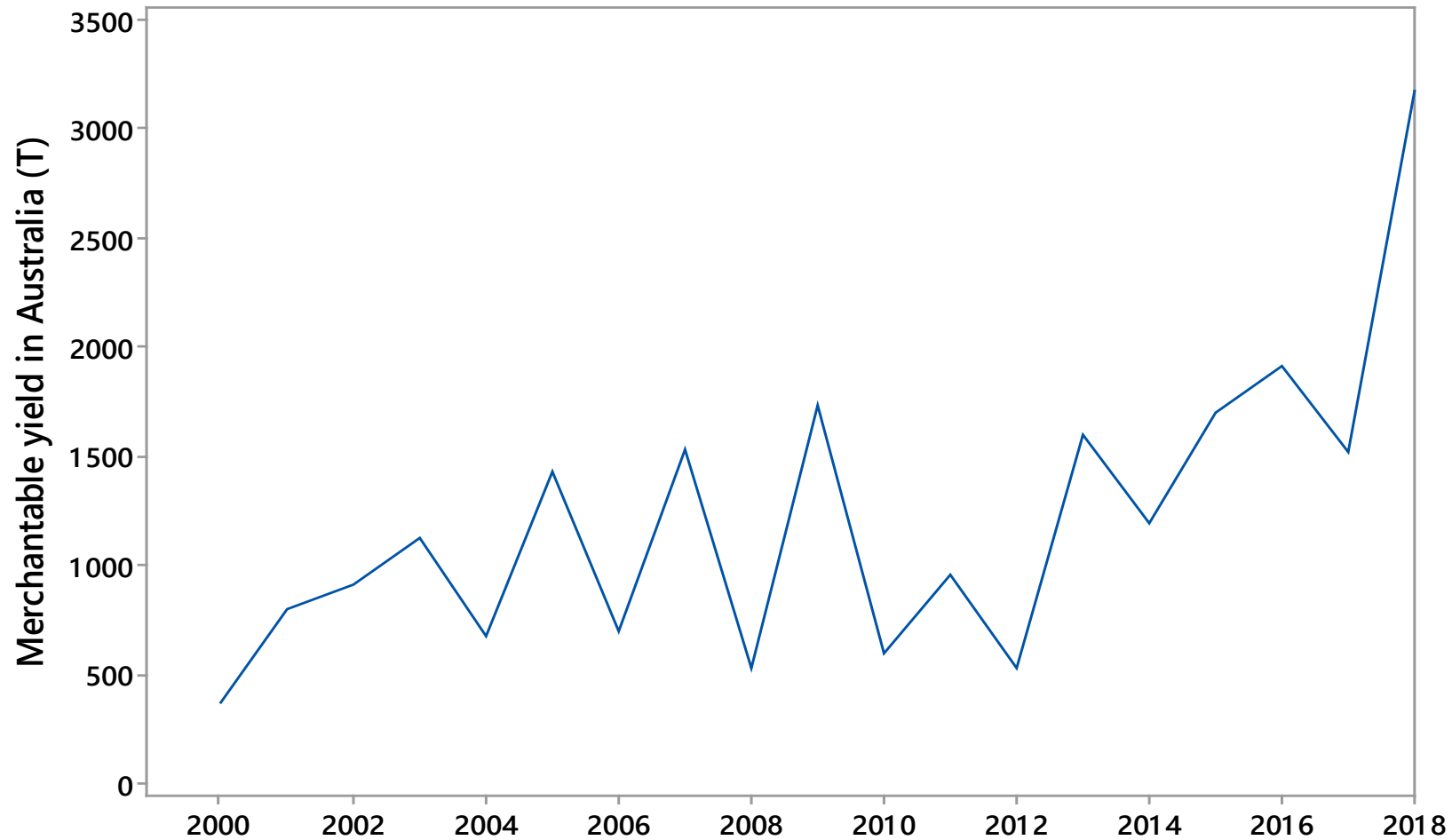


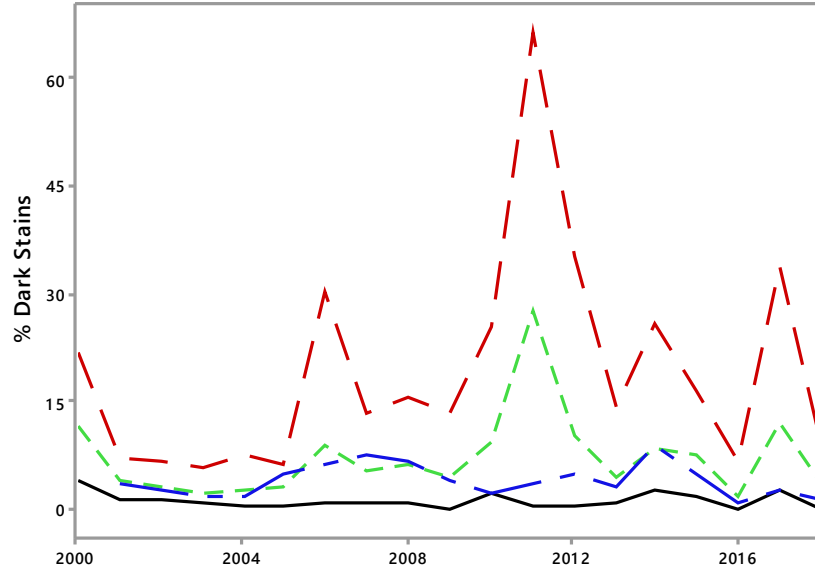
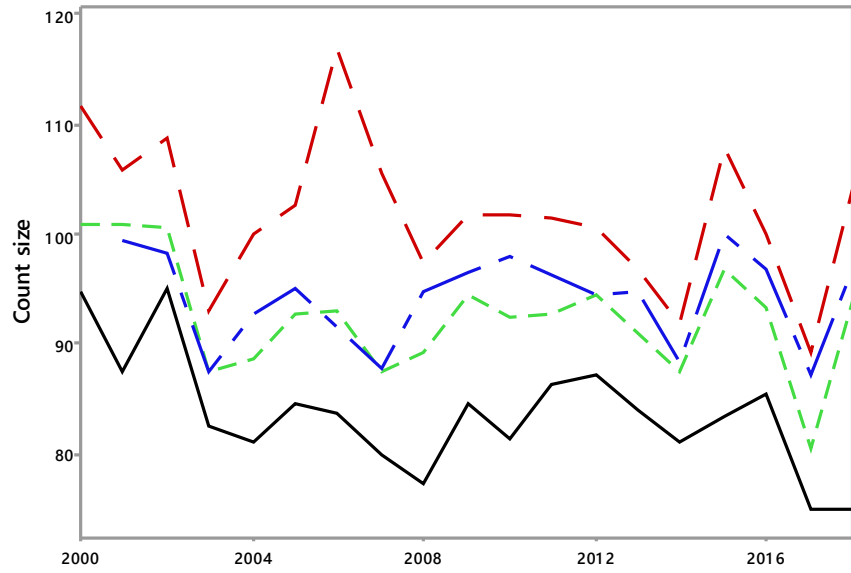
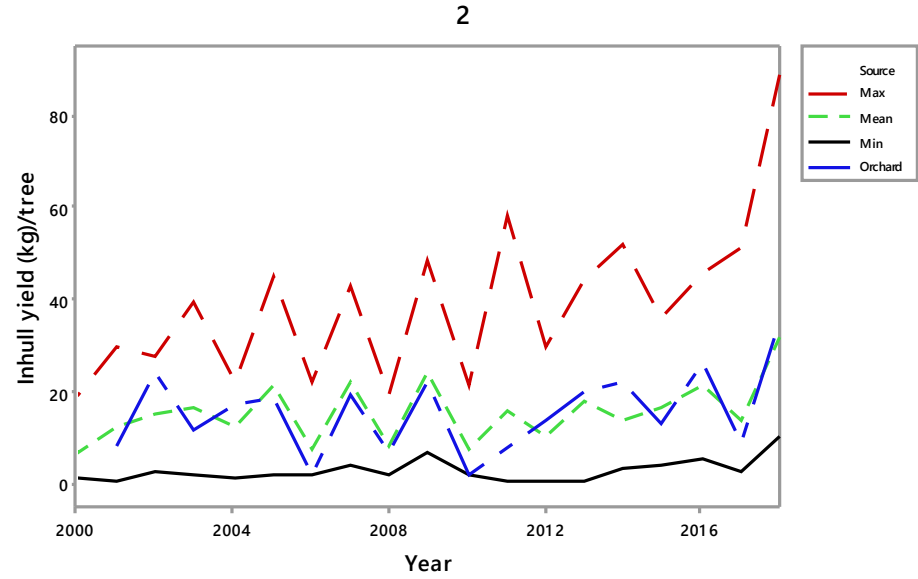
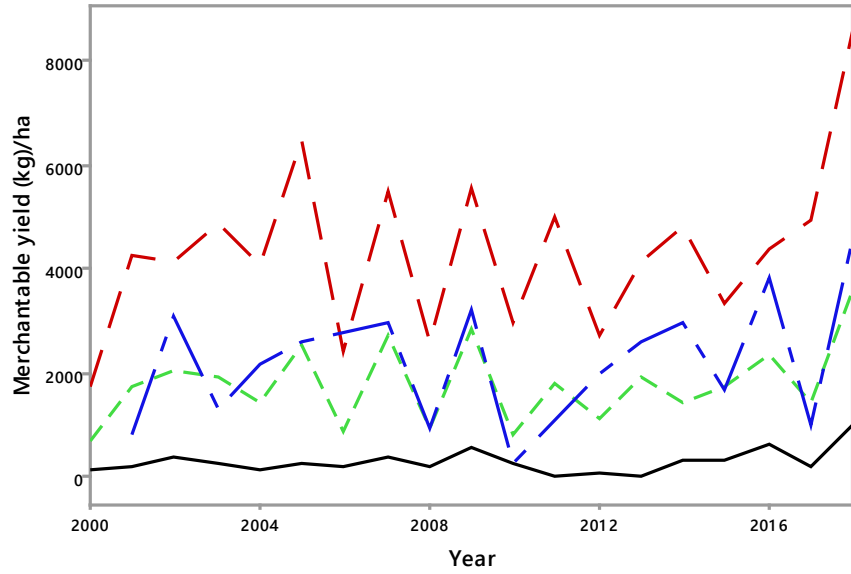
- Grower supplied data for hectares, trees count, age of orchard etc
- Out Turn results provided by APPC for each results to PGA on a confidential basis
- PGA produces average results for each season and individual results for each grower

The graphs show, in different colours :

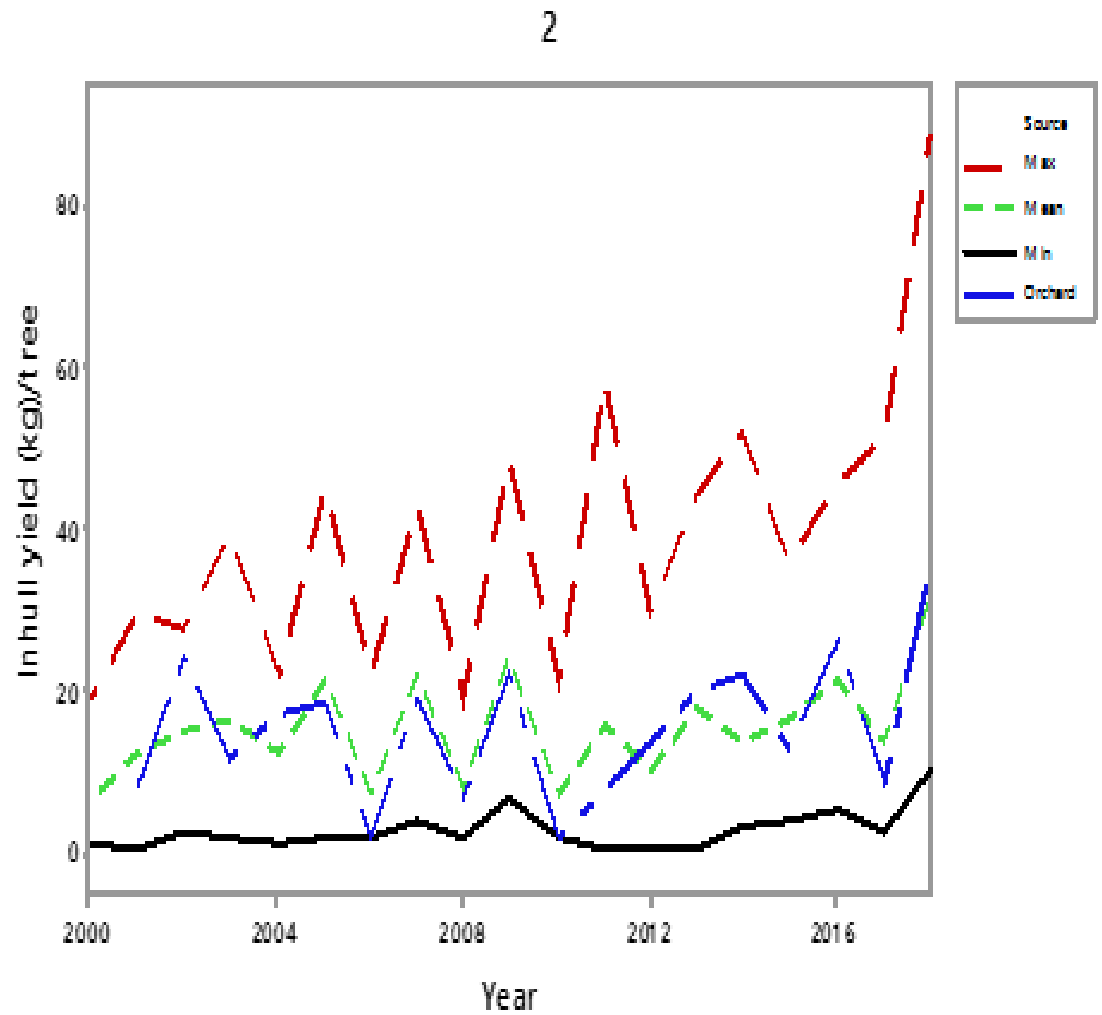
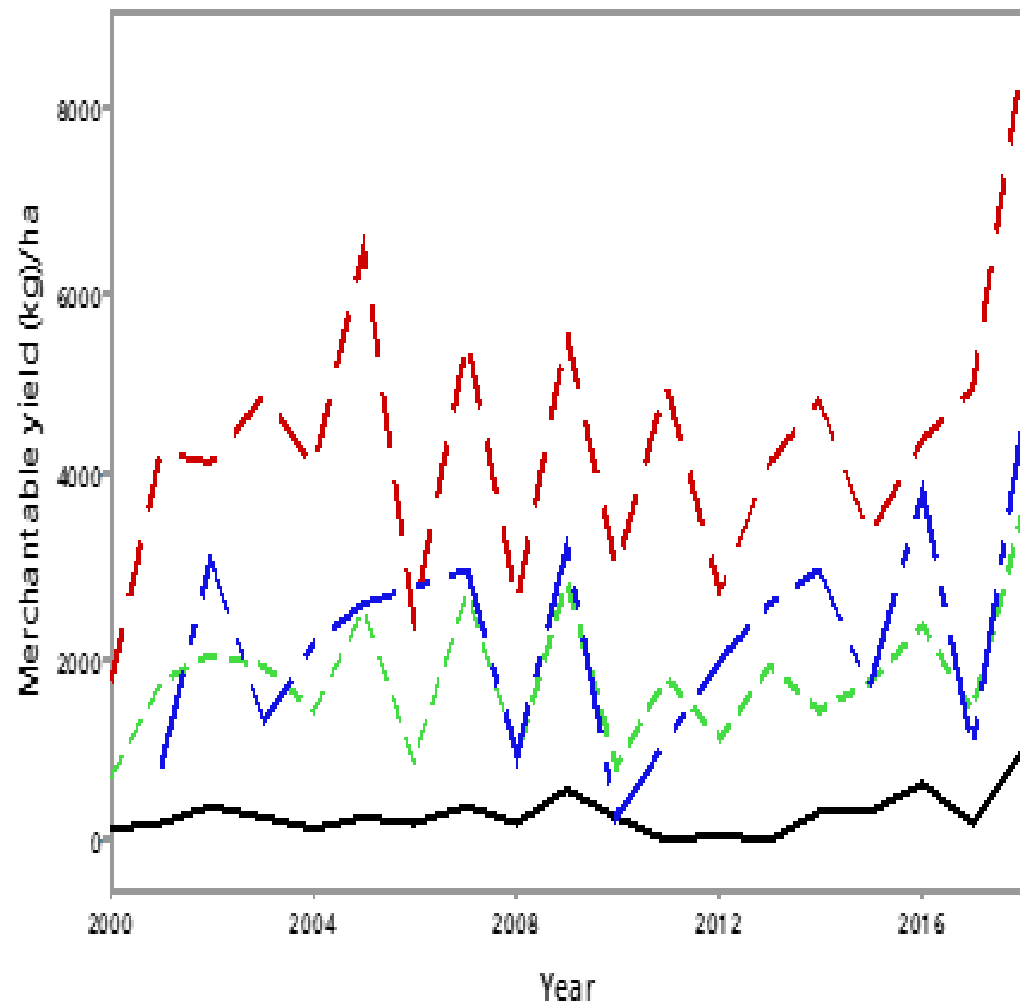
- Best result for any grower
- Average result for all growers
- Your results
- Worst result for any grower

# Average Australian Yields kilograms/hectare





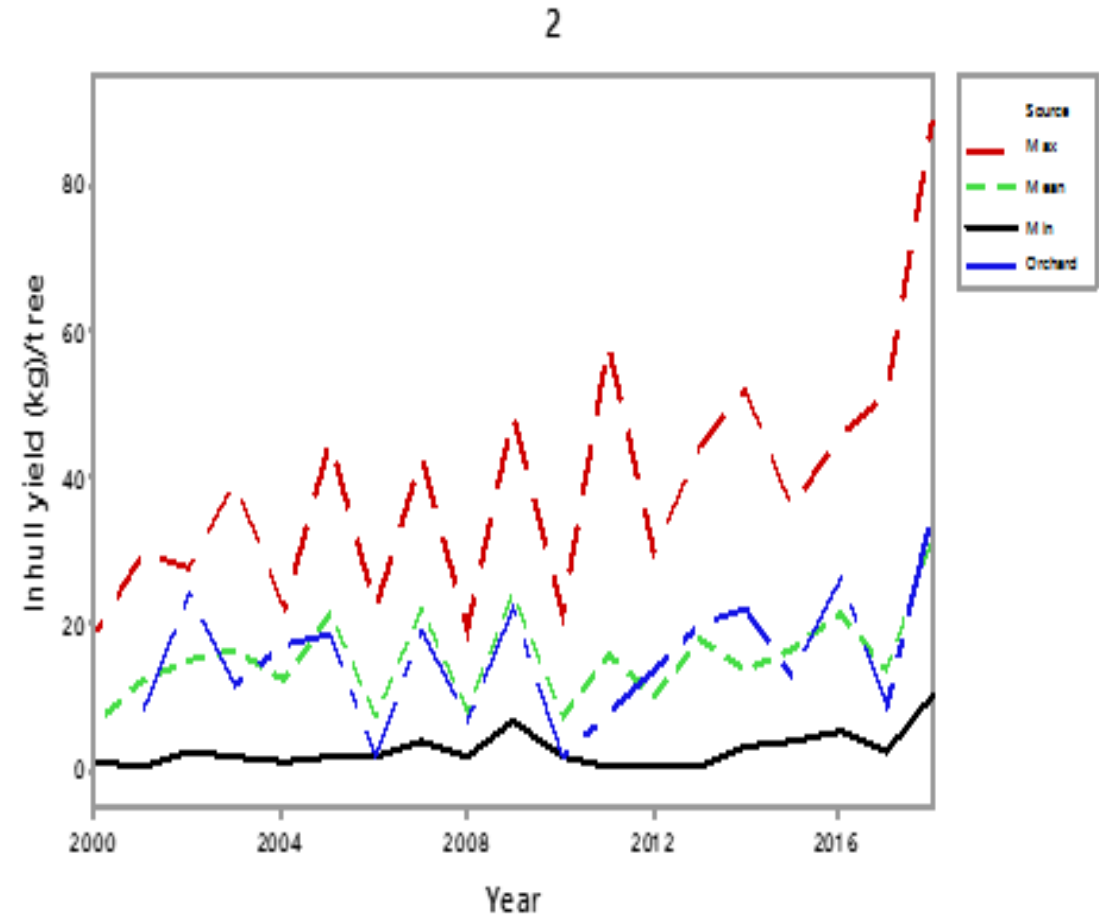
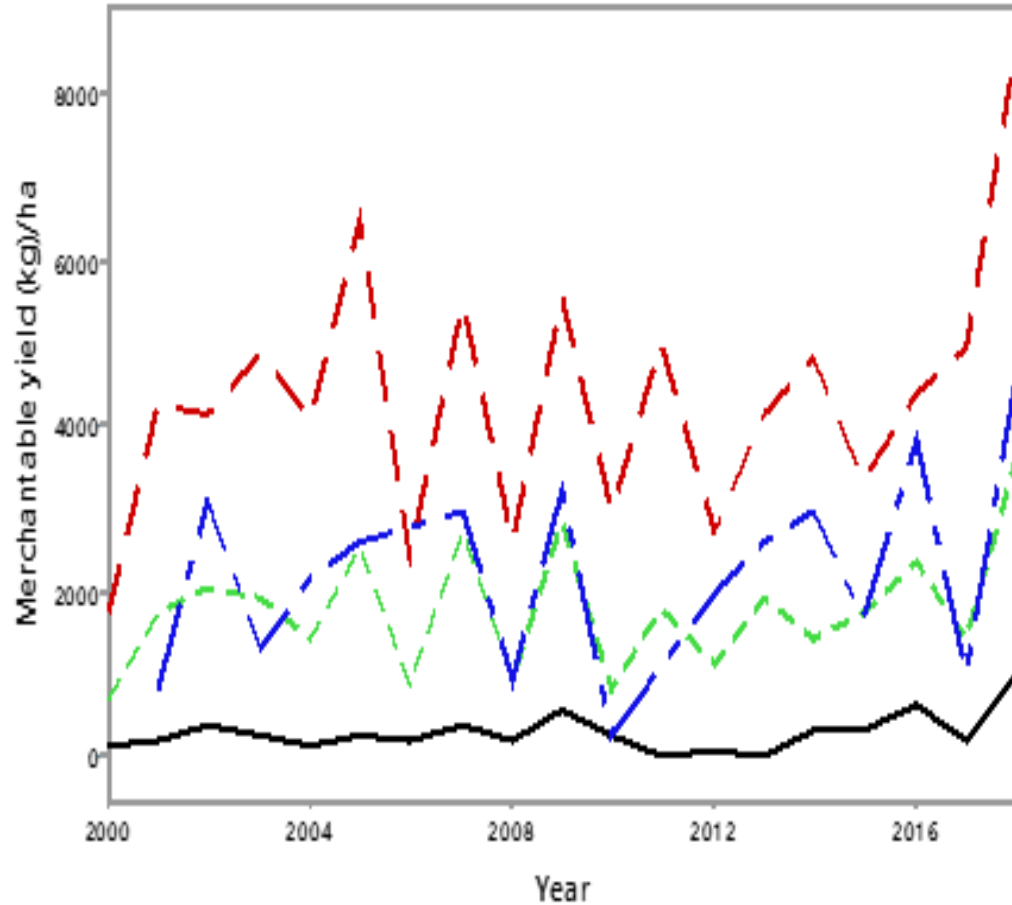




# Merchantable Yield

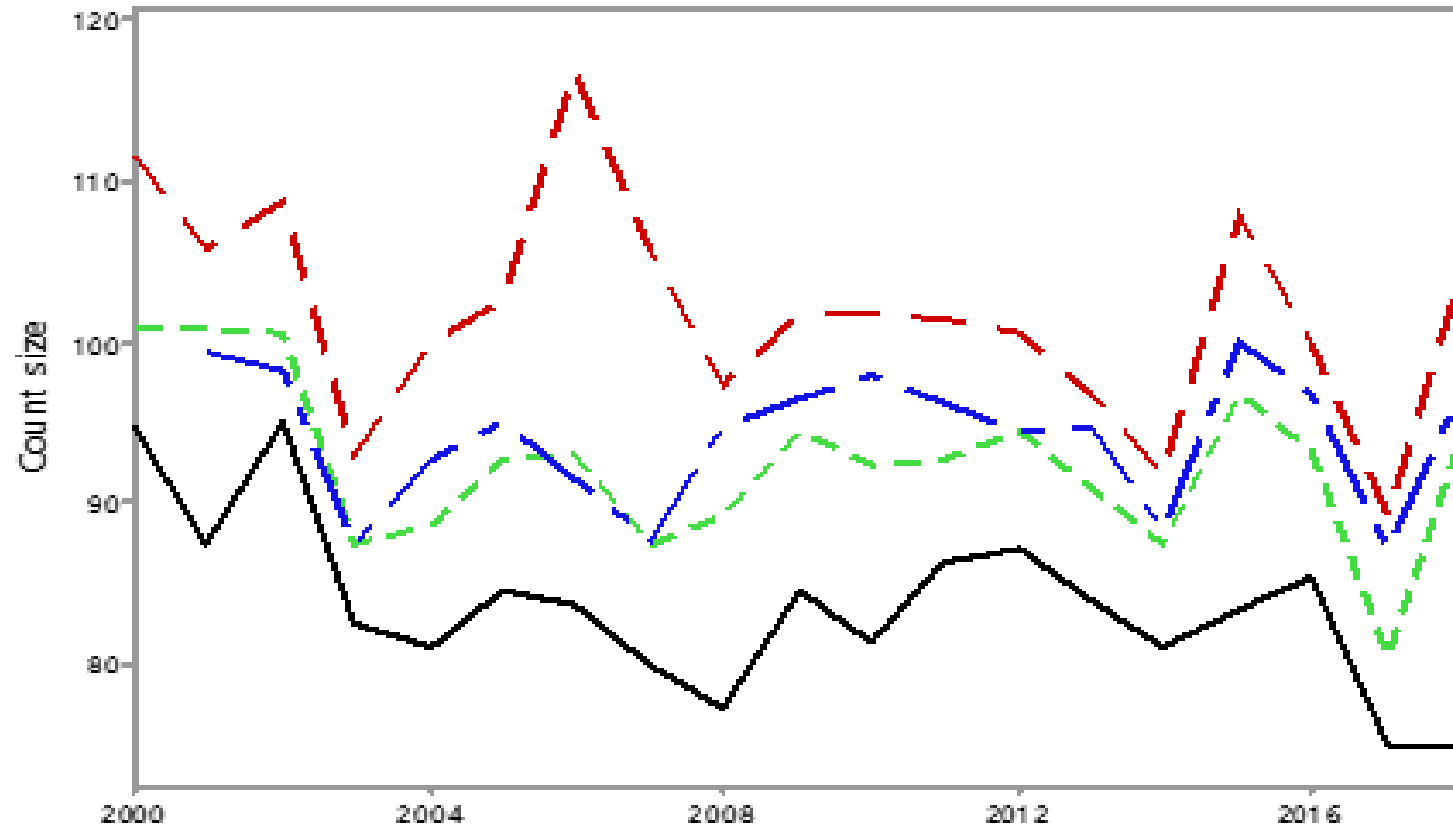
Kg per hectare

Kg per tree

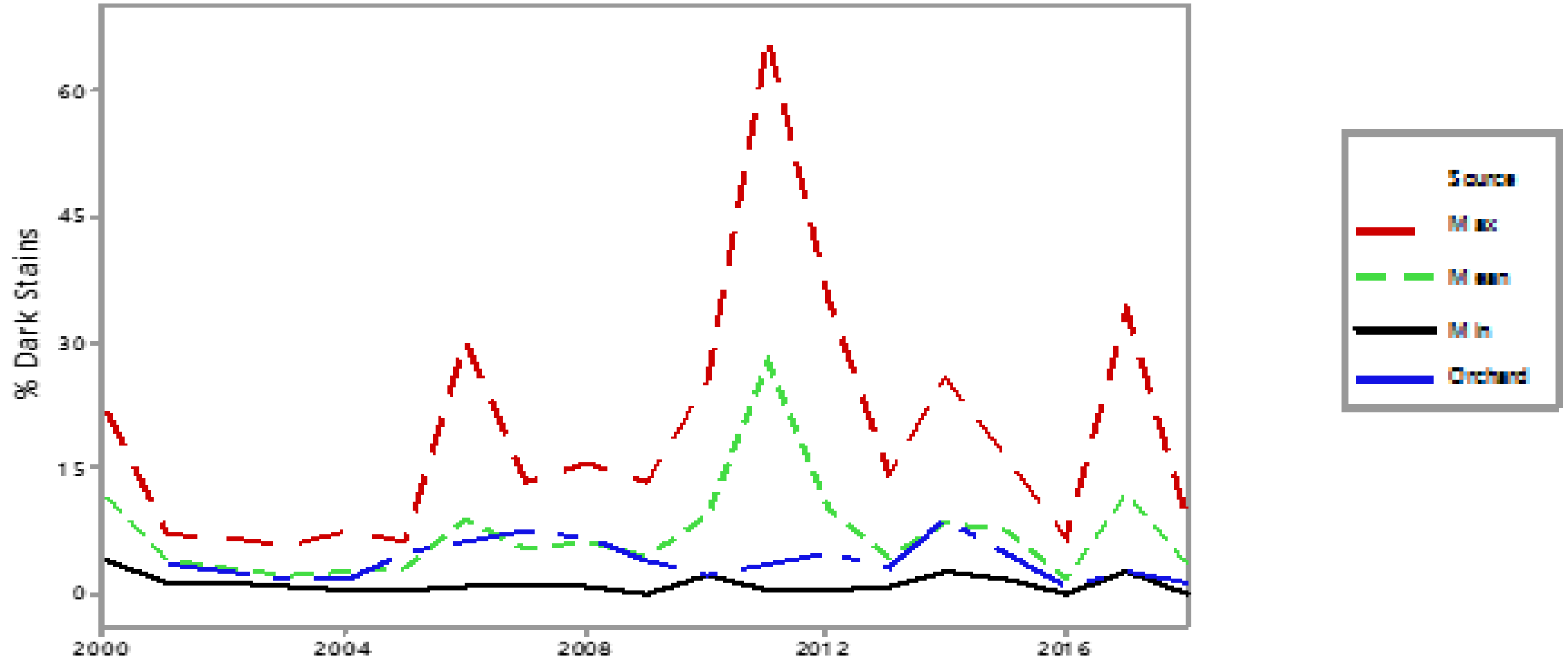


# Count size

nuts per 100gm  
bigger countr = smaller nuts

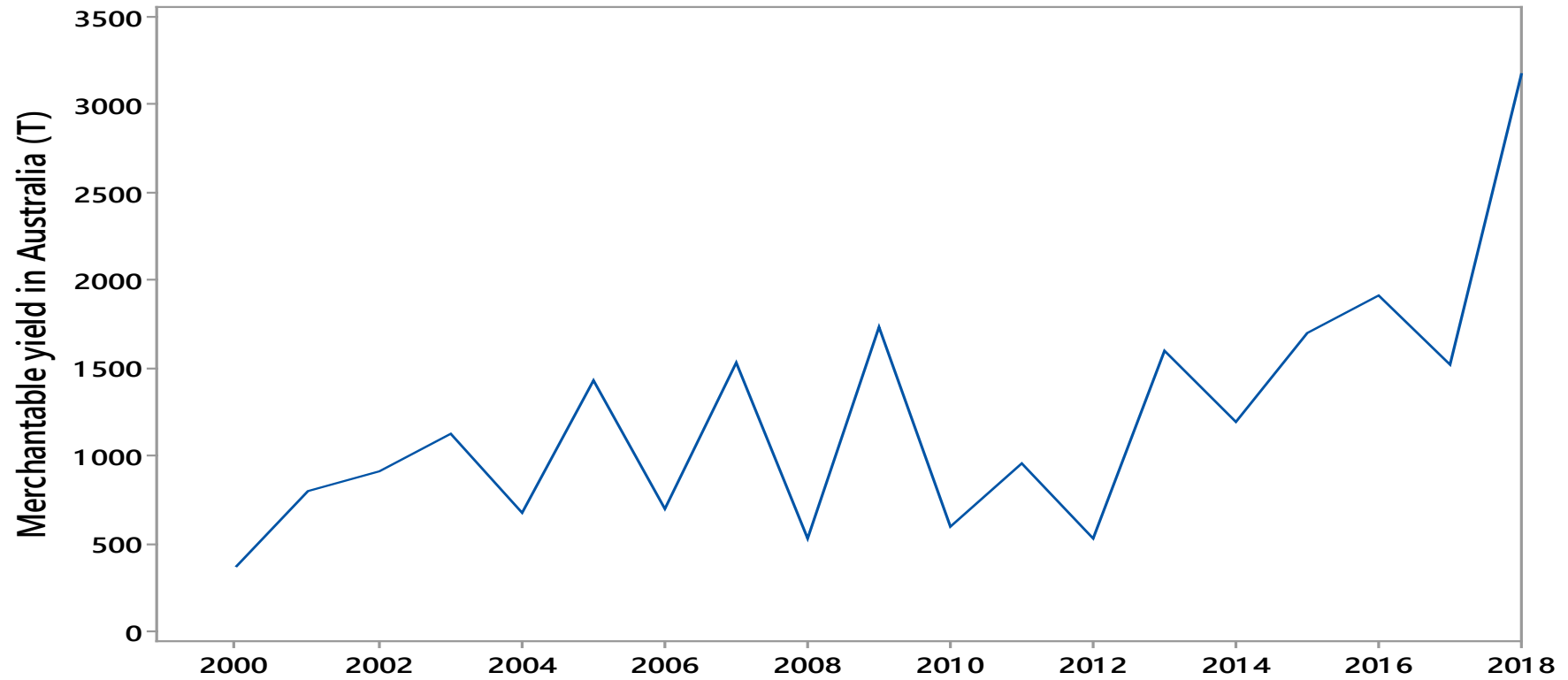


# Dark Stain



# Yield

1,000kg pistachios = ~\$10,000



# The future continues bright and green

