

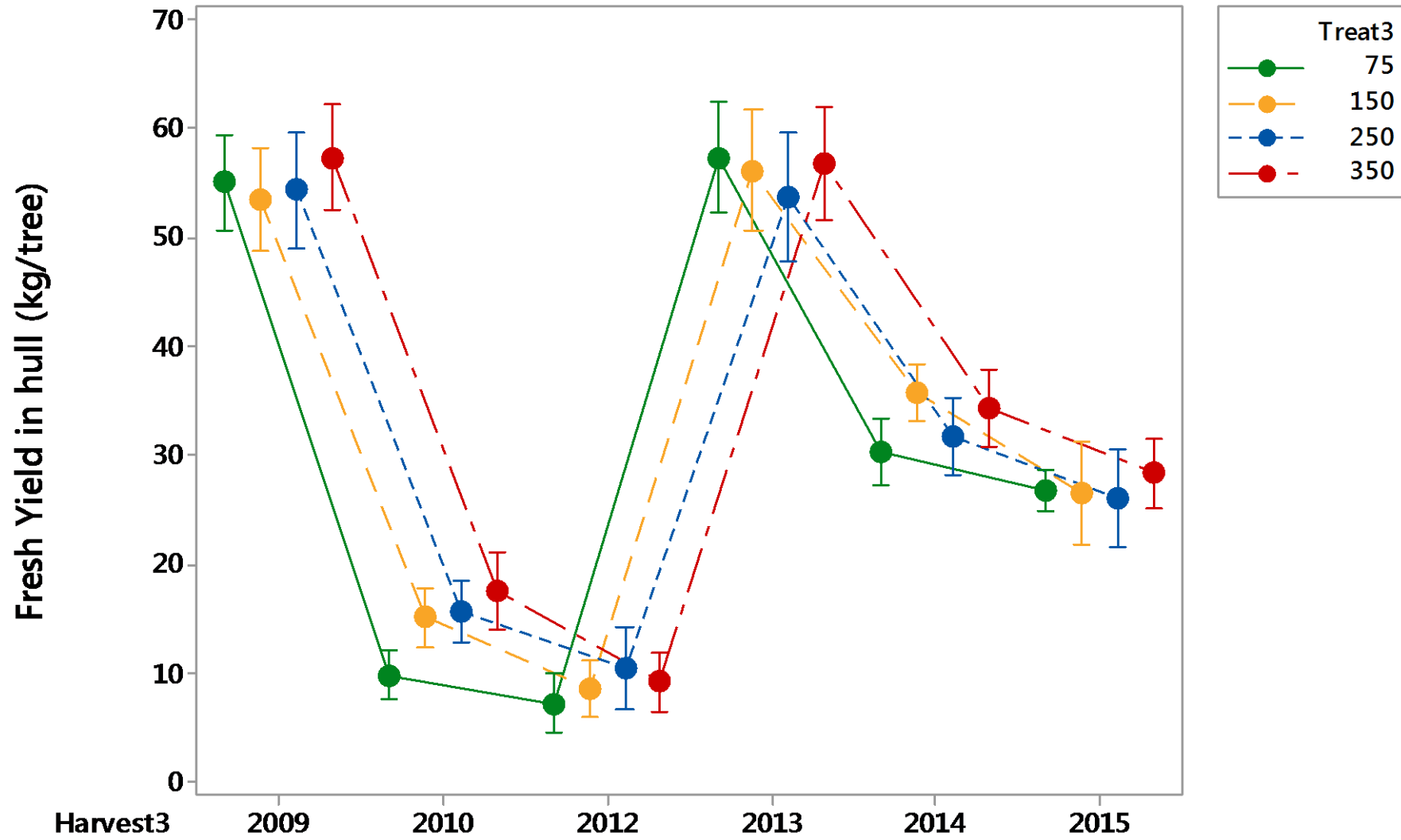
PS14000

Maintaining and expanding the technical development of the Australian pistachio industry



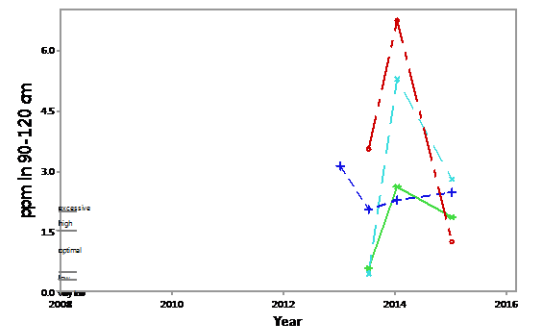
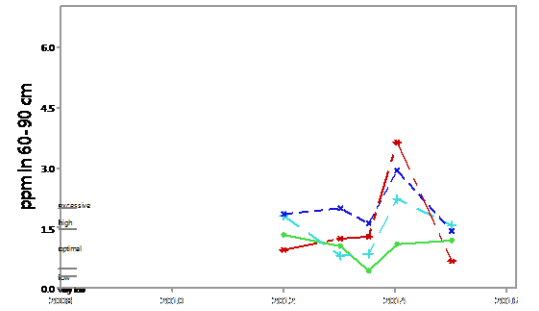
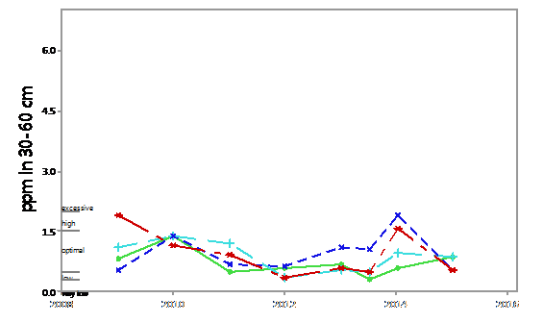
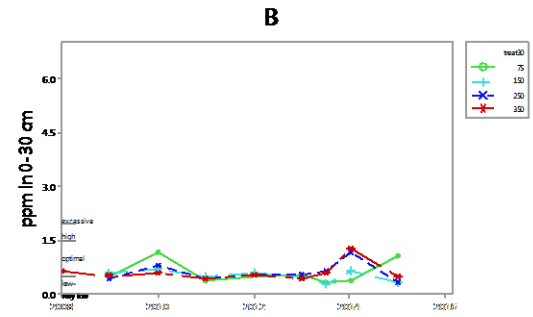
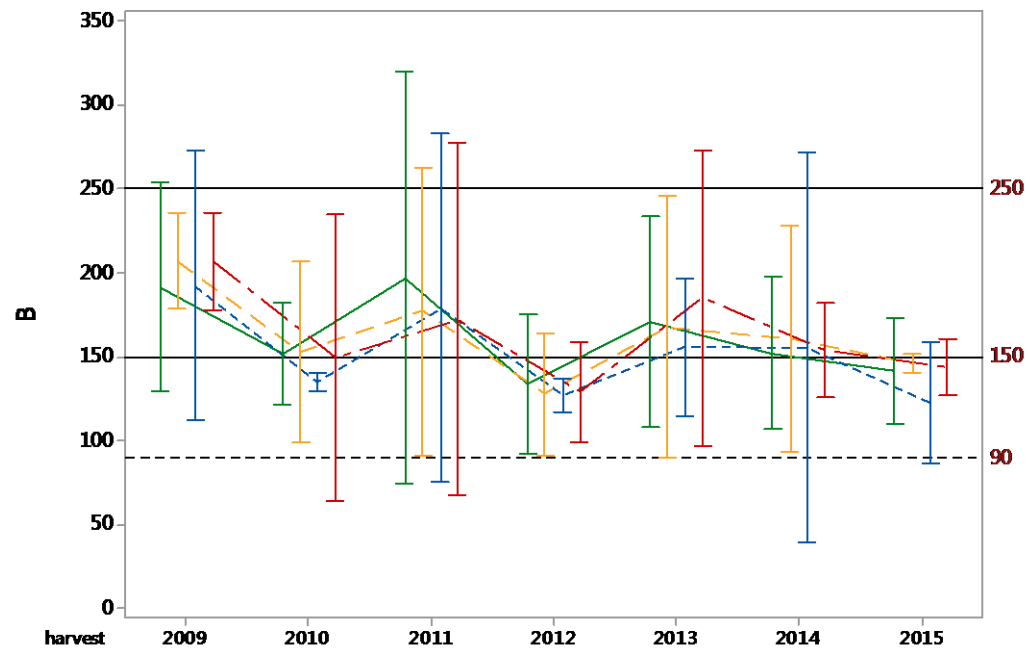
Horticulture
Innovation
Australia

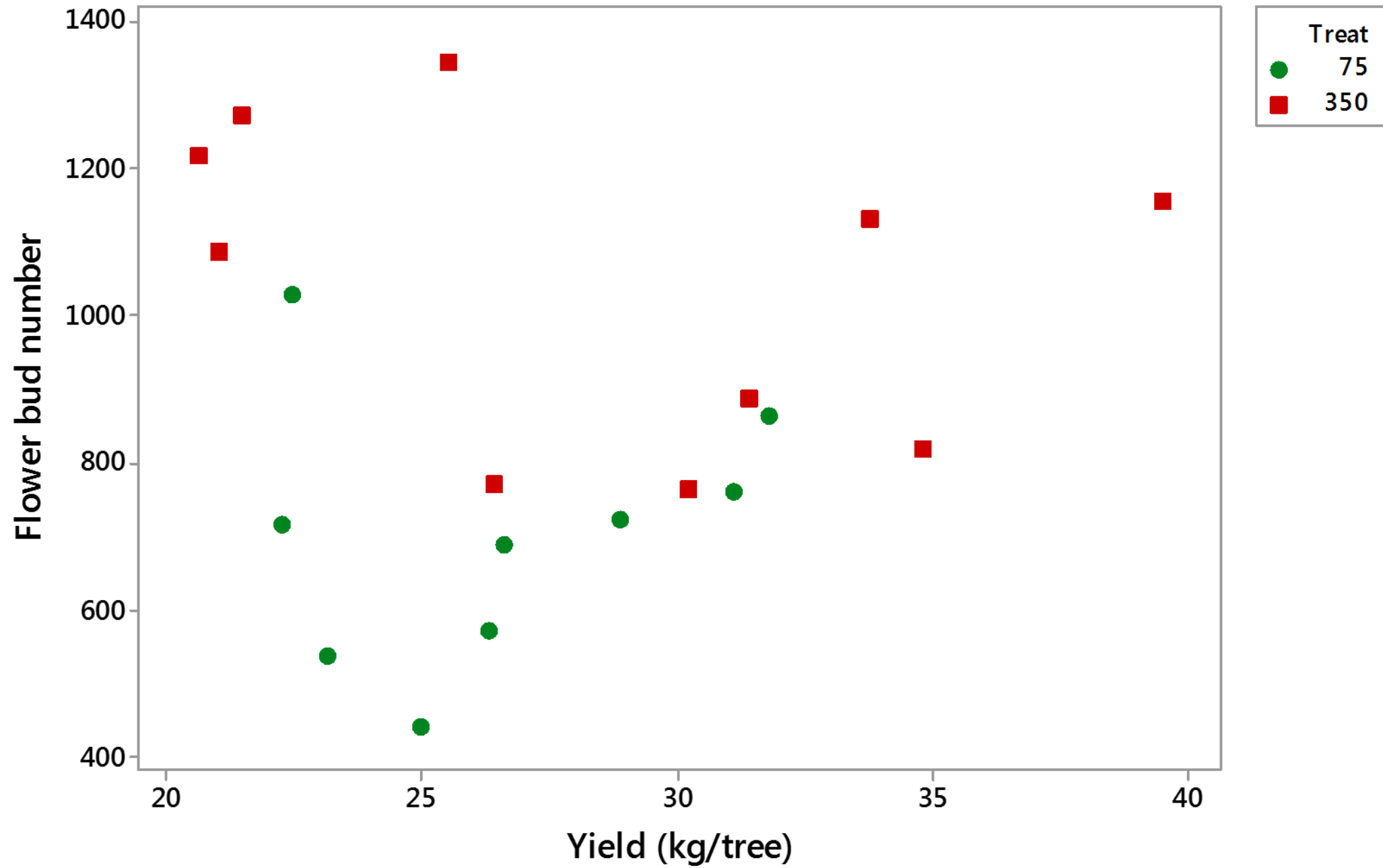
N Trial



Individual standard deviations are used to calculate the intervals.

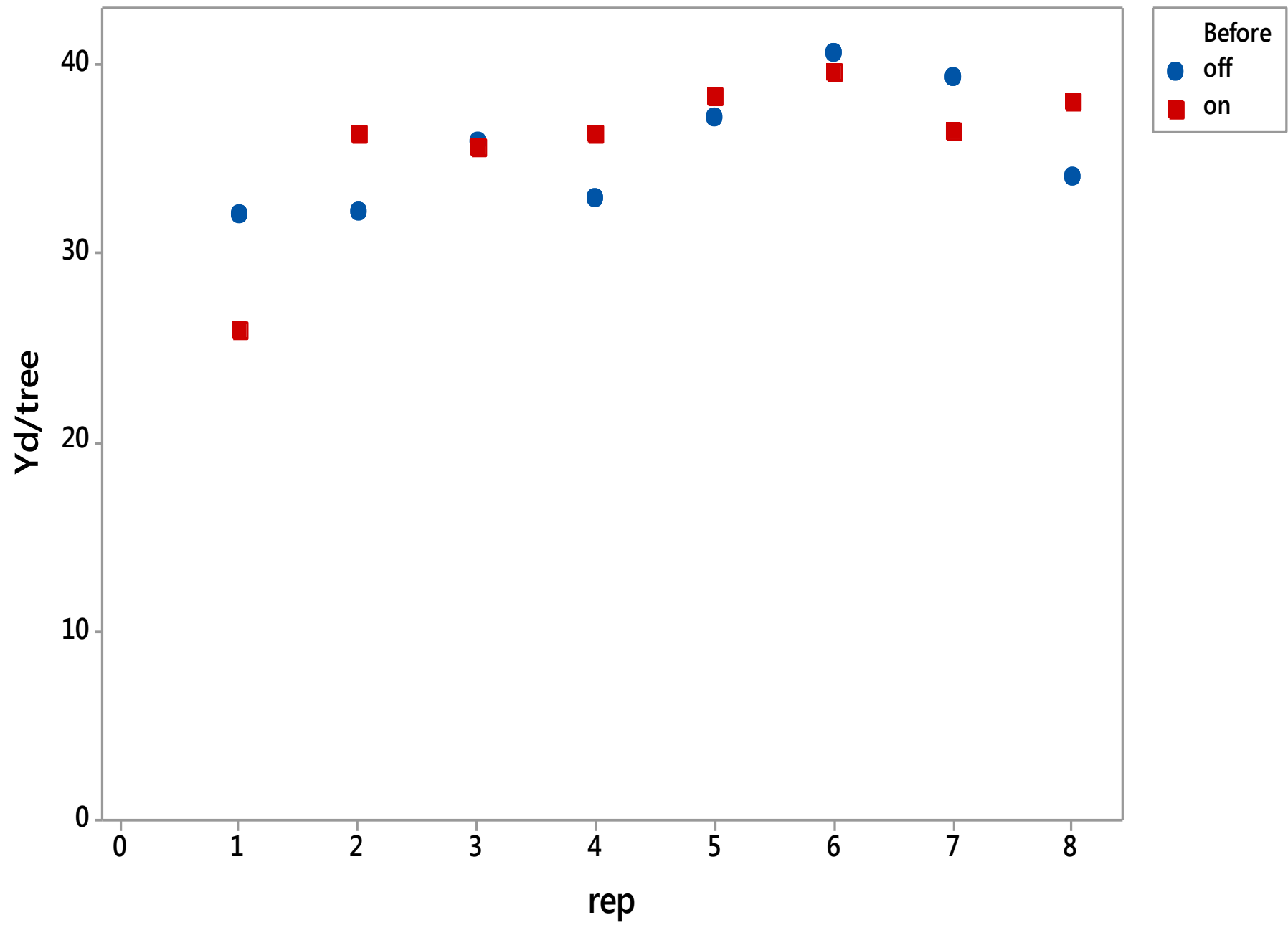
Boron



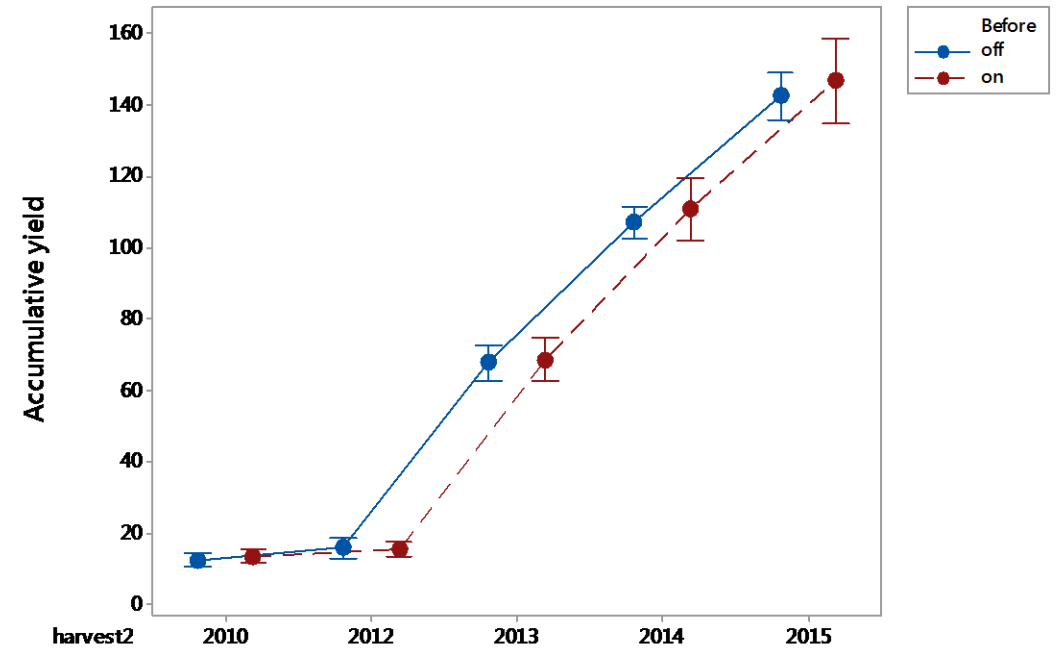
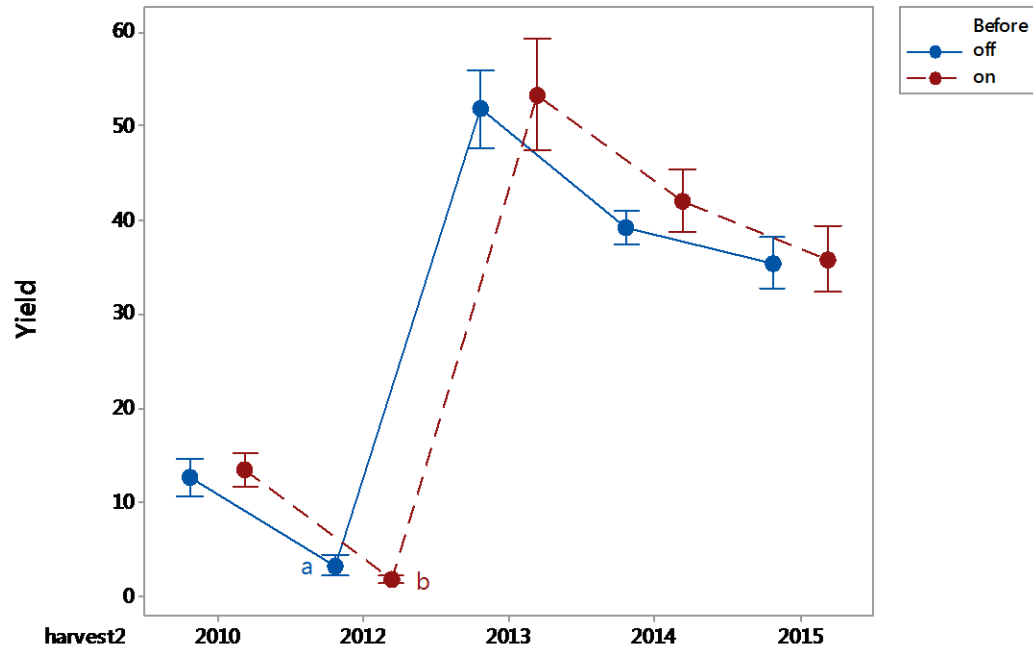


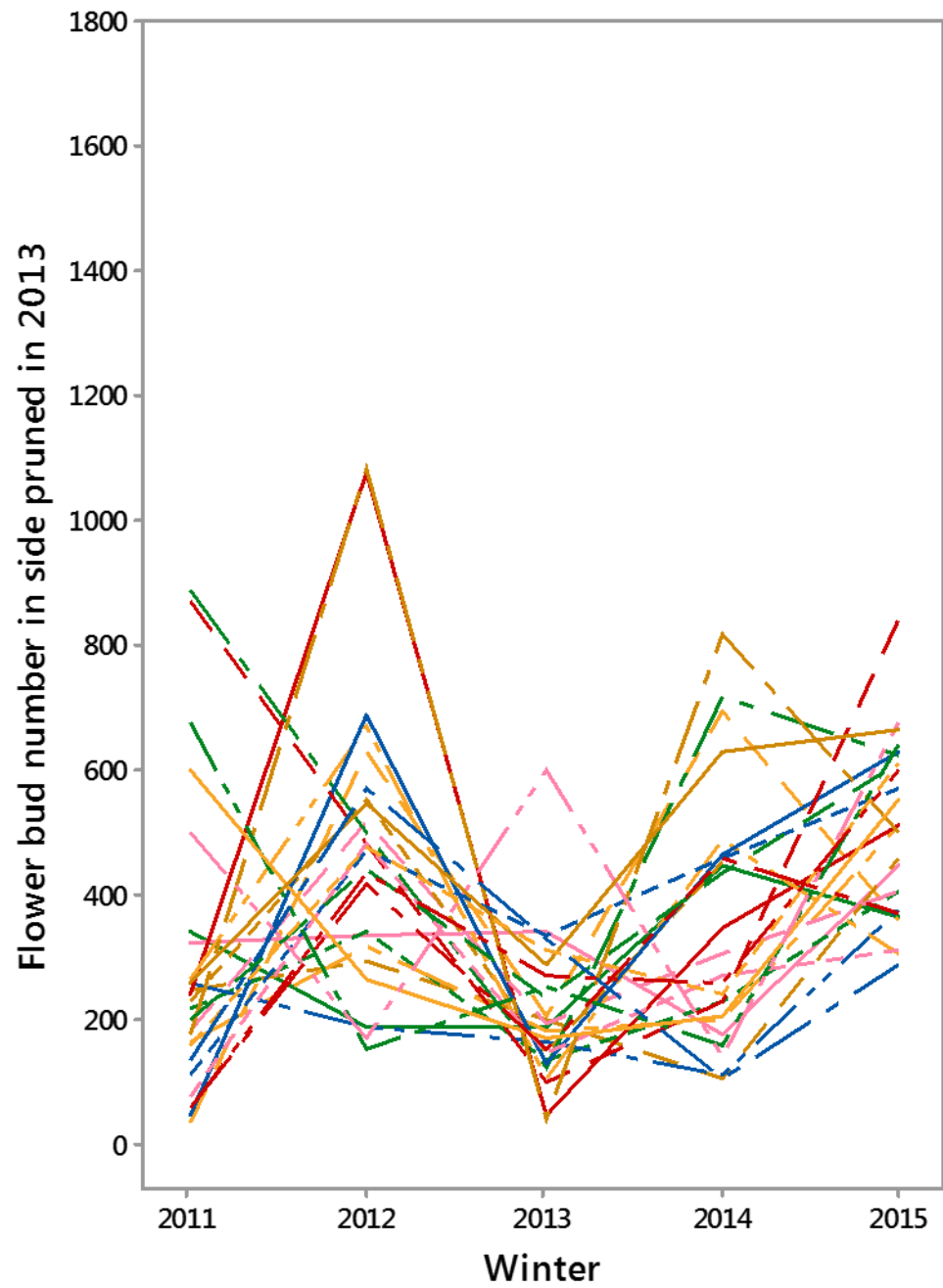
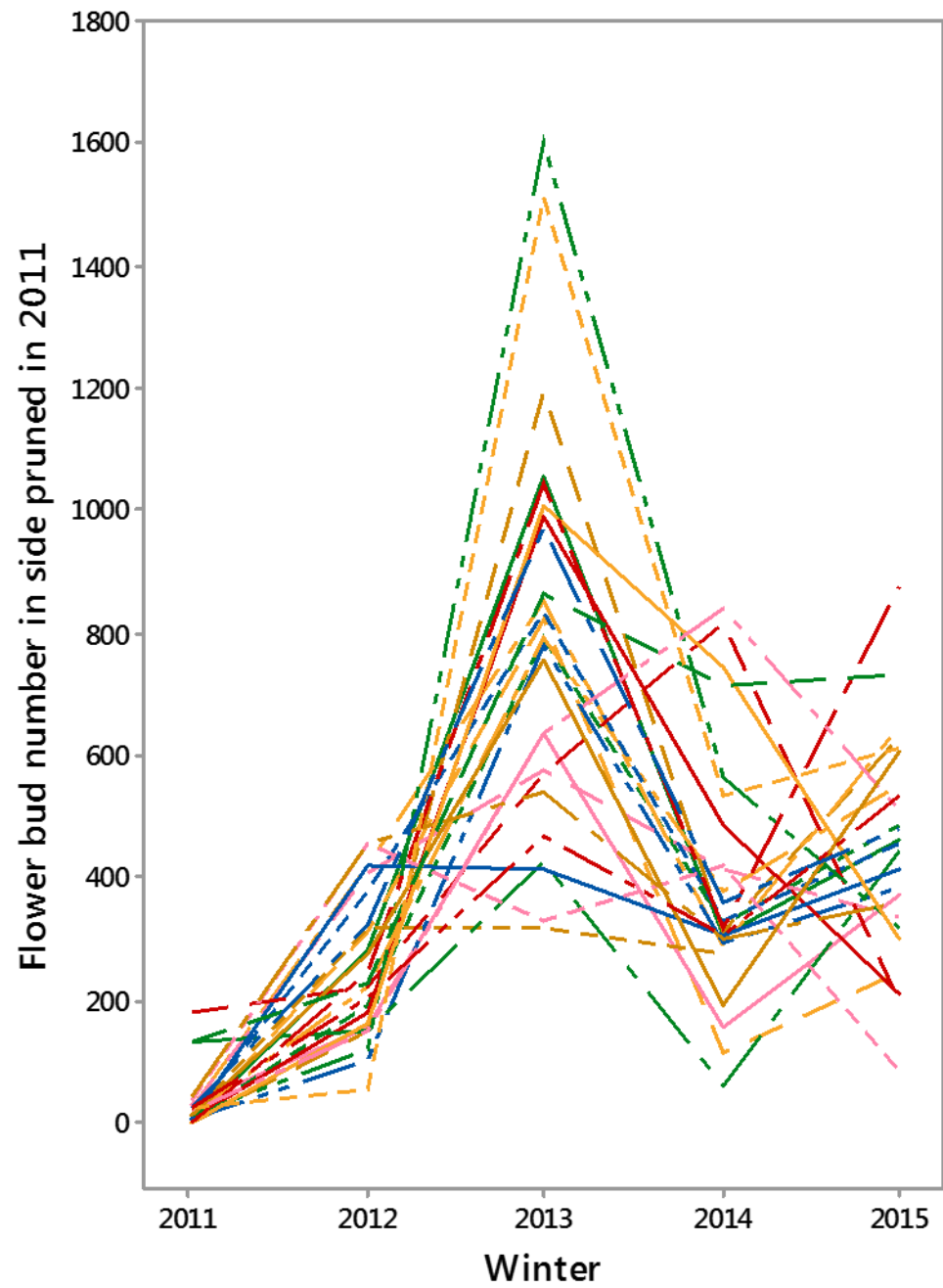
Mechanical pruning trial

Seasons	Treat	Yield in hull/tree (kg)	% shake 1	Count	Merchantabl e yield/tree (kg)	Return /tree (\$)	Acc. Yield in hull/tree (kg)
2009-	On	13.5	95.4	80.5	5.00	34.80	
2010	Off	12.6	95.1	80.0	4.60	32.00	
	p-value	0.579	0.333	0.680	0.522	0.507	
2010-2011 has no trial harvest due to anthracnose							
2011-	On	1.90b	67.0	89.8b	0.61b	3.88b	15.4
2012	Off	3.32a	67.3	91.6a	1.09a	6.94a	15.9
	p-value	0.045	0.891	0.027	0.043	0.049	0.794
2012-	On	53.4	80.3	85.6	14.20	95.0	68.8
2013	Off	51.9	81.5	89.3	14.42	96.6	67.8
	p-value	0.504	0.351	0.120	0.764	0.727	0.756
2013-	On	42.1	79.82	87.2	15.05a	92.4a	110.9
2014	Off	39.2	80.05	88.1	13.59b	83.3b	107.0
	p-value	0.067	0.728	0.256	0.017	0.011	0.360
2014-	On	35.8	62.2	89.6	12.33	84.7	146.8
2015	Off	35.5	61.6	89.9	12.44	86.3	142.6







Yield and accumulated yield





Ro	1	2	3	4	5	6	7	8	9	10	11	12	13	14	15	16
			\			/		/		/						/
1	R	J	R	J	R	R	J	R	R	J	R	J	R	J	R	
2	R	J	J	J	J	J	R	R	J	R	R	J	R	J	R	
3	R	J	J	J	J	J	R	R	J	R	R	J	R	J	R	
4	R	J	J	J	J	J	R	R	J	R	R	J	R	J	R	
5	B	J	B	J	B	J	R	R	J	B	R	J	B	J	B	
6	R	J	J	J	J	J	R	R	J	R	R	J	R	J	R	
7	R	J	J	J	J	J	R	R	J	R	R	J	R	J	R	
8	R	J	J	J	J	J	R	R	J	R	R	J	R	J	R	
9	R	J	J	J	J	J	R	R	J	R	R	J	R	J	R	
10	R	J	R	J	R	J	R	R	J	R	R	J	R	J	R	
11	R	J	J	J	J	J	R	R	J	R	R	J	R	J	R	
12	R	J	J	J	J	J	R	R	J	R	R	J	R	J	R	

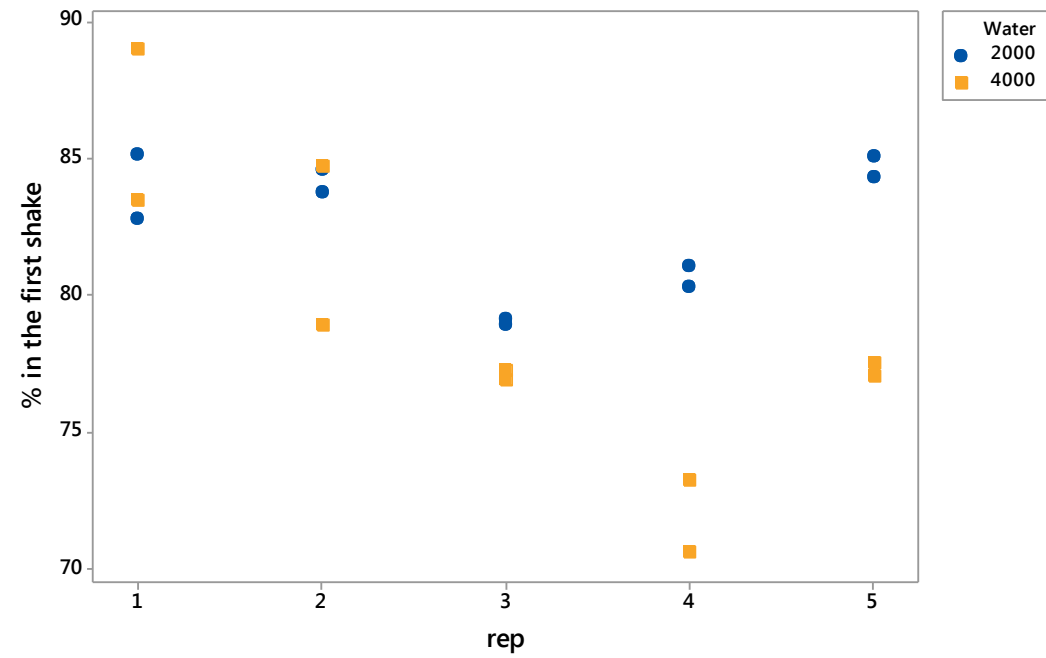
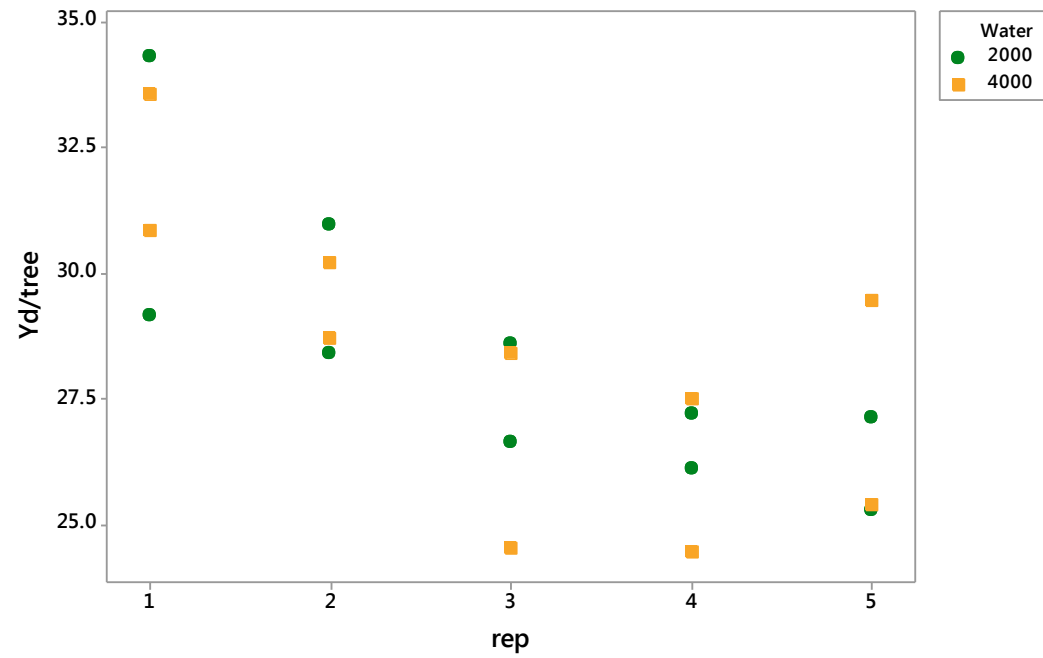
-  1-side slant topping before off-year
-  1-side slant topping before off-year, then following CMV
-  1-side slant topping before on-year
-  1-side slant topping before on-year, then following CMV previous year
- R red male trees
- B blue male trees

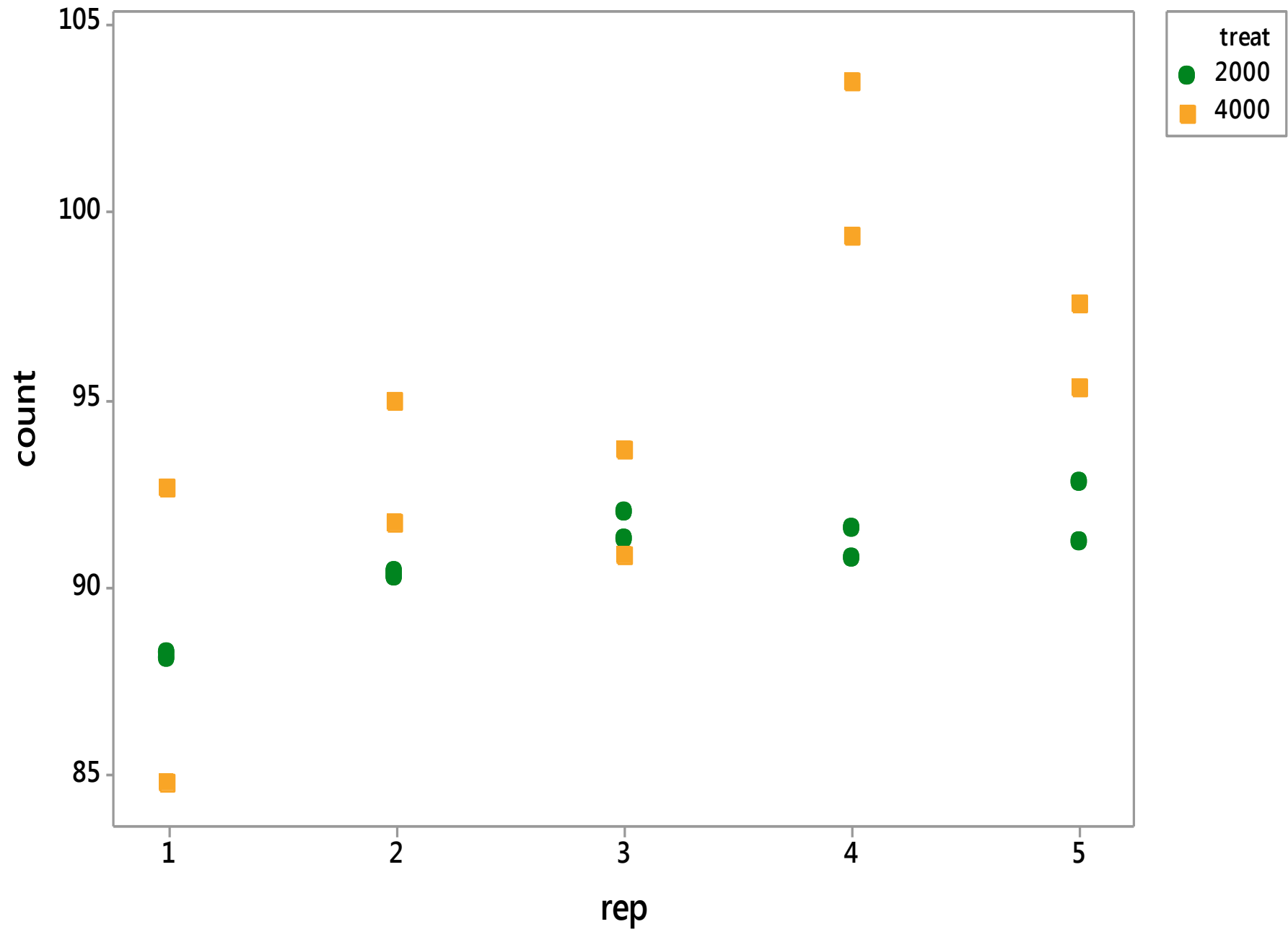
Application and yield

Winter	Application date	Application time	Chill portions
2014	28 th August	Day time	59

Should I change low concentration if chill reaches 59 although it was below 57 on 15 August?

Season	Chill portion	Treat	Yield/tree (kg)	% shake 1	Count	Merchantable yield/tree (kg)	Return \$/tree
2014-		2000L	28.4	82.5a	90.7b	10.03	70.40
2015	59	4000L	28.3	78.9b	94.4a	9.85	68.60
		p =	0.930	0.022	0.011	0.607	0.506





quality

season	Treat	% small	% medium	% jumbo	% narrow split	% non split	% floater	% total non split	% blank	% damaged shell
2014-	2000L	0.42	48.1	12.51	0.30	2.37	1.34	3.70b	6.95	0.12
2015	4000L	0.54	51.9	10.78	0.47	2.62	1.77	4.39a	7.28	0.12
	p-value	0.103	0.127	0.075	0.070	0.269	0.225	0.042	0.472	0.781

season	Treat	% pickout	% loose kernel	% adhere	% dark stain	% gold stain	%SEL nut	% other stain	% light stain
2014-	2000L	5.97	0.85	0.34b	5.58	0	0.00	0	21.2a
2015	4000L	6.06	0.99	0.86a	5.10	0	0.01	0	17.5b
	p-value	0.996	0.348	0.018	0.391		0.334		0.028